



PROPERTY
BUREAU
LETTING & ESTATE AGENTS



Hardie Court
Stirling
FK7 0QU

3 
1 
2 

Offers Over £162,500

A well-presented 3 bedroom end terrace house set in a peaceful cul-de-sac of a popular residential development.

The size, flexibility and excellent condition, including stylish kitchen and shower room make this home suitable for a wide range of potential purchasers from First Time Buyers to Families.



Home Report Valuation
£165,000

Council Tax Band C

EPC Rating C



The accommodation consists on the ground floor of entrance hallway, WC, well equipped kitchen with appliances and exceptionally spacious lounge with direct access to the rear garden. The upper floor has a fabulous shower room, three bedrooms and handy walk in storage cupboard.

Double glazing has been installed and warmth is provided by gas fired central heating.

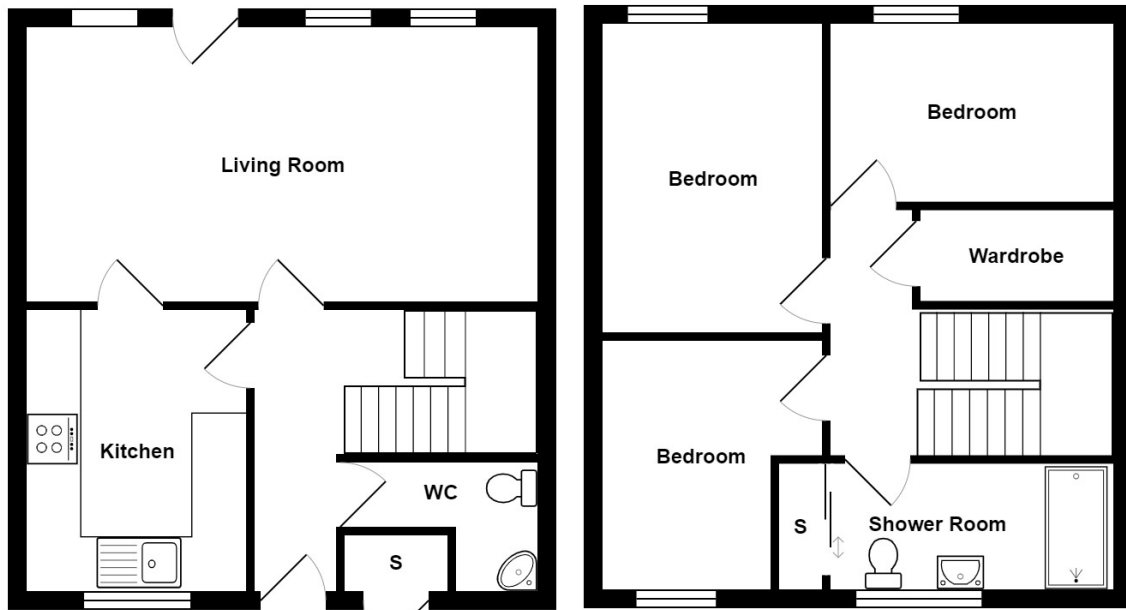
A fully enclosed garden, designed for ease of maintenance, is situated to the rear and consists of decking and patio areas. A driveway to the front of the home provides off street parking.



Vendor Comments

The house offers great accommodation which is flexible for modern living.

6, Hardie Court, FK7 0QU



All measurements are approximate and for display purposes only

Location

Hardie Court is located within the sought after Broomridge area of Stirling and provides access to the superb range of amenities within the City Centre with its High Street multiples and specialty shops. For those having to commute by way of business the area is well provided for by the national road network system and by public transport services.





www.propertybureau.co.uk

Glasgow **Stirling** Helensburgh Lanarkshire

74 Port Street, Stirling, Stirlingshire, FK8 2LP

enquiries@propertybureau.co.uk
01786 464449

Whilst this brochure has been prepared with care, it is not a report on the condition of the property. Its terms are not warranted and do not constitute an offer to sell. All area and room measurements are approximate only. Floorplans may not be to scale.

