



Linn Walk
Garelochhead
G84 0DS

2 
1 
1 

Offers Over £110,000

This impressive End Terraced Villa is situated in the original part of the village and has a great private outlook to the rear over mature woodland.

The house has been modernised and is in excellent condition which would be ideal for a first time buyer or someone maybe moving from a flat looking for a home with nice gardens within a quiet established location.

The property itself is traditionally constructed with granolithic exterior finish beneath a pitched, concrete tiled roof and has pvc double glazed windows, gas central heating and a good sized loft area.

Internally the house is in good order throughout with modern decoration, impressive kitchen and bathroom in addition to a good sized living room with window to front and rear.

At the front is the garden has a hedged border and pathway leading round to the larger rear garden which is mainly lawned and borders onto open woodland. The house is also in a favourable position as it is adjacent to a large grass area at the size which again affords a bit more privacy.



Home Report Valuation
£115,000

www.packdetails.com

Council Tax Band B

EPC Rating D



The full accommodation comprises hallway, large lounge/living room which has ample space for a dining table if required and also a lovely focal point fireplace with wooden surround.

The kitchen has been upgraded with modern floor and wall storage units incorporating sink and drainer, built in gas hob, oven and hood, wall mounted central heating boiler, plumbing for washing machine and a door directly to rear garden.



On the upper level the landing has a window to the side and also hatch to the loft storage area.

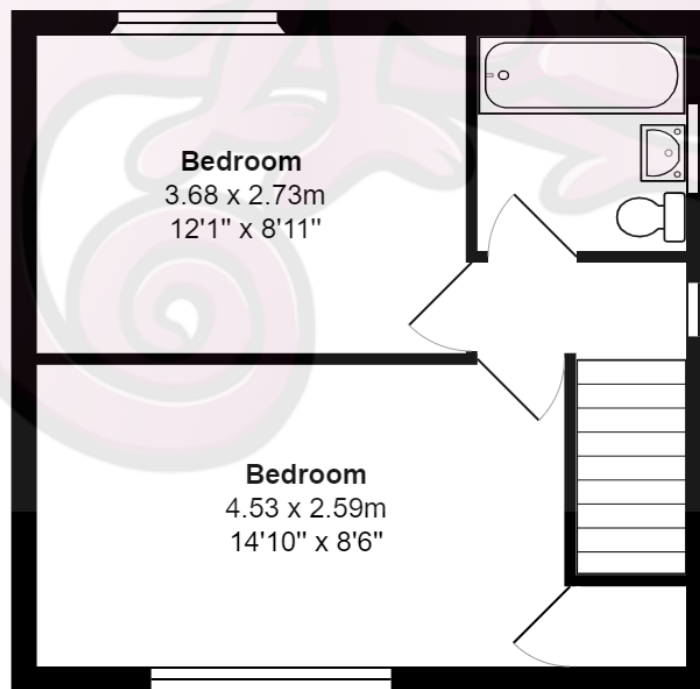
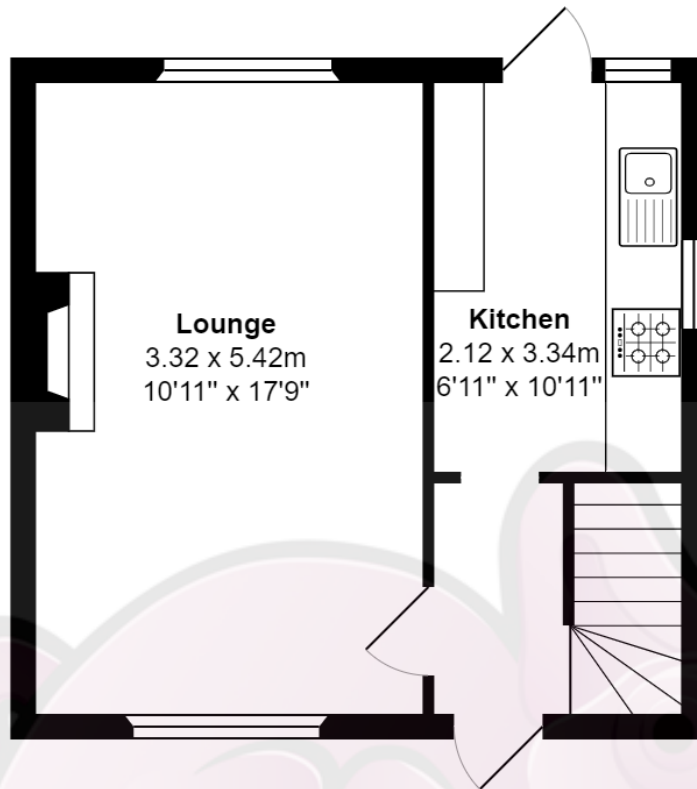
There are two double bedrooms which are both an excellent size and both have really nice open views. Plenty of space for free standing wardrobes.

New modern bathroom with attractive white three piece suite comprising bath with glass screen, sink in vanity unit with storage underneath and a close coupled w.c. Window to the side and a shower off the mixer taps.



Vendor Comments

it is a nice quiet place to live and I enjoyed having easy access to lots of good areas for hillwalking.



Total Area: 60.2 m² ... 649 ft²

All measurements are approximate and for display purposes only

Location

The picturesque village of Garelochhead is surrounded by some of Scotland's most picturesque scenery and lies on the northern shore of the Gareloch. The village provides local churches, shops, pub, coffee shops, recently opened out-door centre, garage, train station (with regular services to Glasgow), frequent bus services, playing fields and park.





www.propertybureau.co.uk

Glasgow Stirling **Helensburgh** Lanarkshire

9 Colquhoun Street, Helensburgh, Dunbartonshire, G84 8AN

enquiries@propertybureau.co.uk
01436 674537

Whilst this brochure has been prepared with care, it is not a report on the condition of the property. Its terms are not warranted and do not constitute an offer to sell. All area and room measurements are approximate only. Floorplans may not be to scale.

