



Glenview Crescent
Moodiesburn, Glasgow
G69 ONJ

3 
2 
1 

Offers Over £178,000

This modern Semi Detached Villa is traditionally constructed and finished with low maintenance facing brick and render exterior beneath a pitched, concrete tiled roof .

The house has been well maintained and is situated on one of the largest plots which affords an excellent sized garden to the rear (with open outlook) and also plenty of space at the side which gives obvious potential for future extensions if required, subject to planning.

The monobloc driveway at the side leads to a large single sectional garage with new Horman up and over door.

At the rear the garden is slabbed and then has a second chipstoned area on the next level with perimeter timber fencing.

Internally the property is freshly decorated throughout and provides ideal family accommodation over two levels.

Front entrance porch provides a large entrance and then from here the main front door opens to the original hallway.



Home Report Valuation £185,000

www.packdetails.com

Reference: HP761363

Postcode: G69 0NJ

Council Tax Band D

EPC Rating C



Large and bright main lounge with double glazed picture window to the front, laminate flooring, access to under stair space which houses the central heating boiler.

The kitchen has new modern floor and wall storage units with integrated hob, oven and hood. Contrasting dark worktop area with matching splashback and the far side is open plan to the dining room with a free standing breakfast bar area which has space and plumbing underneath for washing machine.

The dining area has window to the rear and ample space for large table.

Upstairs the landing has window to the side which gives a really nice open view, hatch to loft area and further storage cupboard.

There are two large double bedrooms and a single front facing bedroom where many similar houses have built a bed on the stairhead space which is a great use of the space.



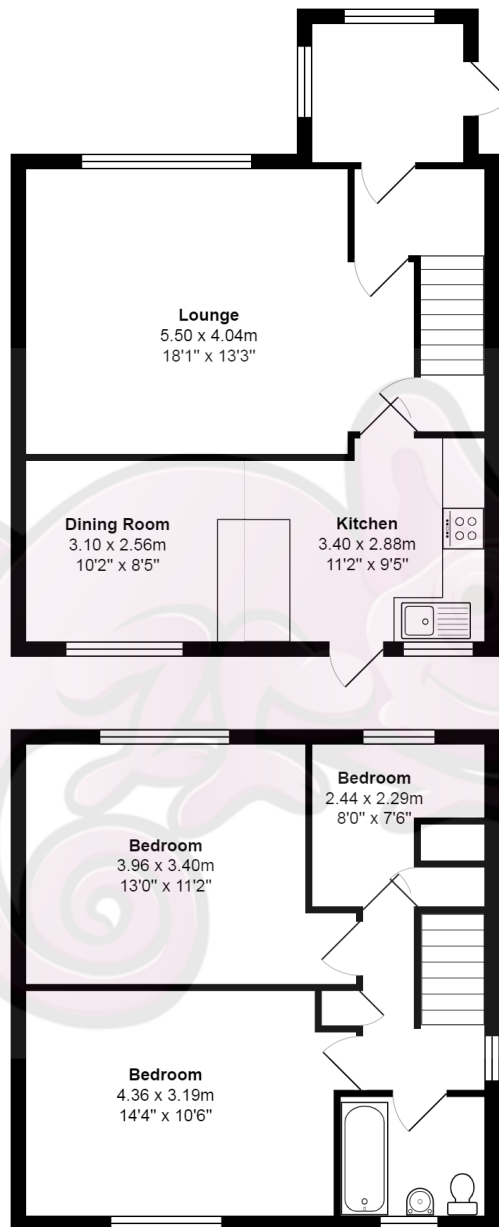
The modern bathroom has a new three piece suite comprising panelled bath, pedestal sink and w .c. with modern wet wall, new ceiling and inset lights and a window to the rear.

The property further benefits from gas central heating, and modern pvc double glazing.



Vendor Comments

This has been a really good house and particularly liked the large gardens and the space between neighbouring properties which makes it feel very private,



Total Area: 91.4 m² ... 984 ft²

All measurements are approximate and for display purposes only

Location

Located off Gartferry Road, Glenview Crescent, is well positioned within easy reach of the centre of Moodiesburn and its amenities including schooling. There is also ease of access via the Cumbernauld Road to the M73. Glasgow City Centre is just some eleven mile away via the M80 so it is also well placed for commuting to Glasgow or Stirling.





www.propertybureau.co.uk

Glasgow Stirling Helensburgh Lanarkshire

Melville House, 70 Drymen Road, Glasgow, G61 2RH

enquiries@propertybureau.co.uk
0141 943 1110

Whilst this brochure has been prepared with care, it is not a report on the condition of the property. Its terms are not warranted and do not constitute an offer to sell. All area and room measurements are approximate only. Floorplans may not be to scale.

